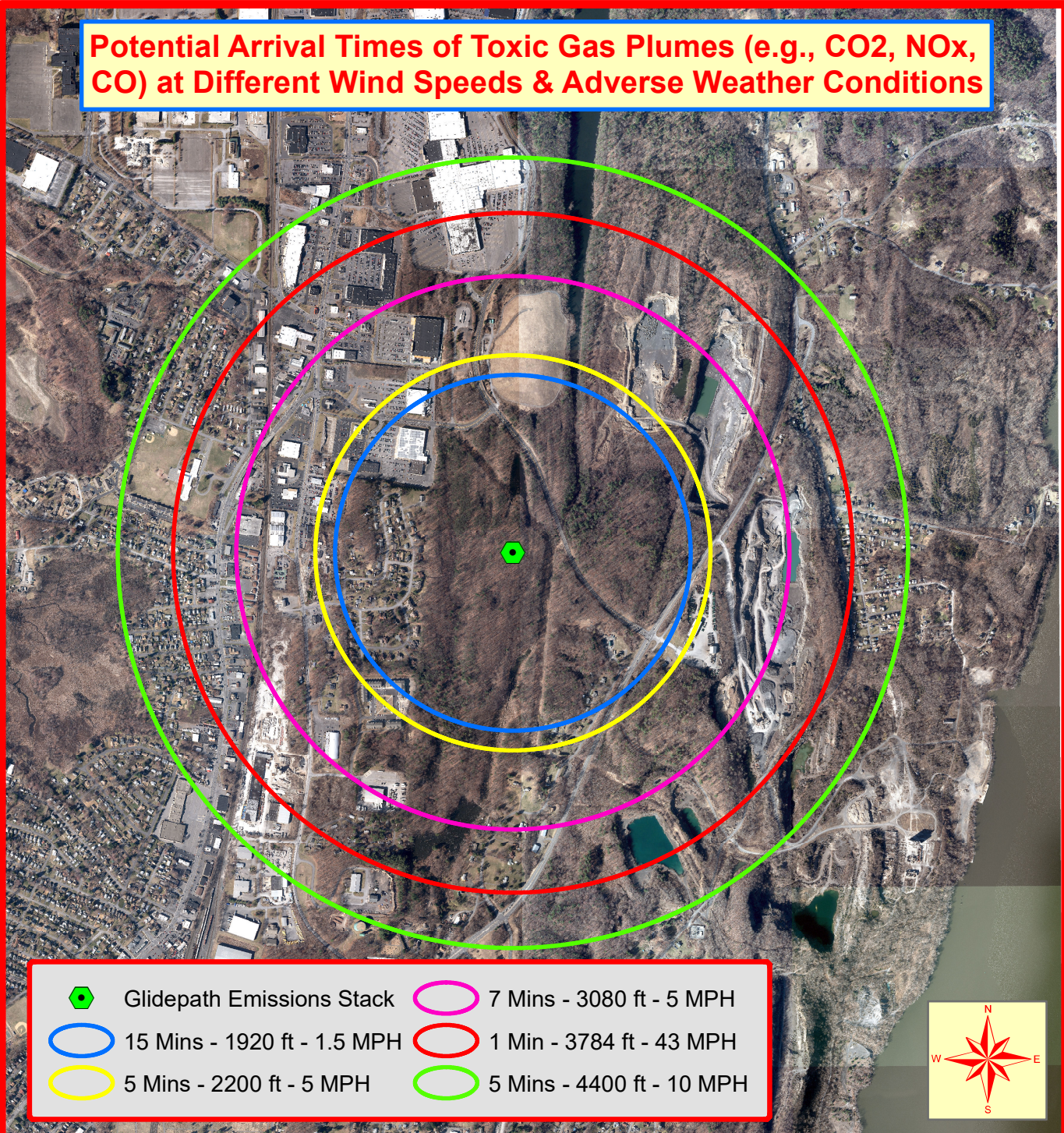


# Potential Arrival Times of Toxic Gas Plumes (e.g., CO<sub>2</sub>, NO<sub>x</sub>, CO) at Different Wind Speeds & Adverse Weather Conditions



**Air Quality Scoping Issues:** Identify all potential human receptors that may inhale toxic exhaust emissions from the Lincoln Park stack under worst case weather conditions (e.g., temperature inversions). Identify all potential adverse health impacts (e.g., CO<sub>2</sub> poisoning/hypercapnia).

**Notes:** Nearest Weather Station: KNYKINGS15  
 Location: 2.6 miles south - near Rondout Creek  
 5-Year Average Wind Speed: 1.5 MPH  
 Annual High Wind Speeds: 14 to 37 MPH  
 Highest Wind Gust: 43 MPH (3-02-17)  
 Wind Directions: All Wind Directions

0 750 1,500 3,000 4,500 6,000 Feet

**2016 Imagery**

Paul A. Rubin  
 HydroQuest  
 414 E. Kerley  
 Corners Road  
 Tivoli, New York 12583  
 845-657-8111  
[hydroquest@yahoo.com](mailto:hydroquest@yahoo.com)